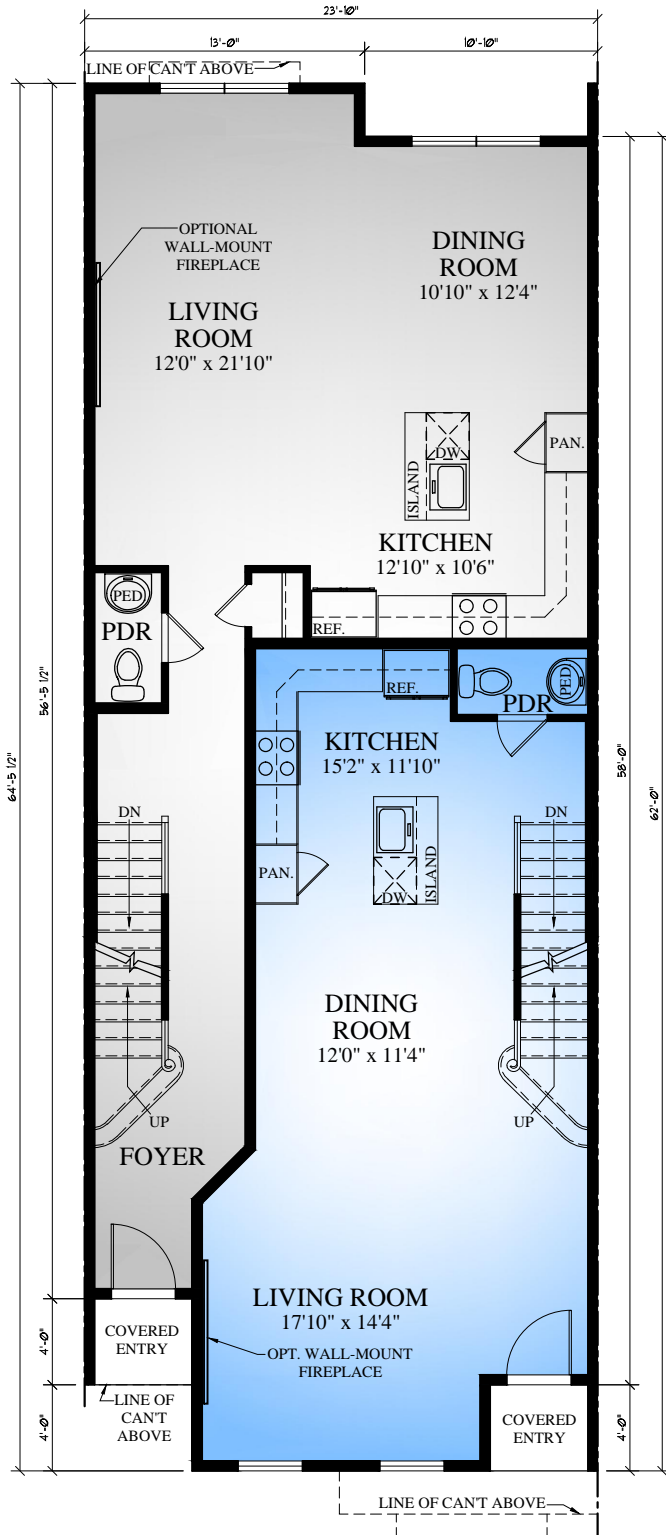


| SQ. FT.   | FRONT UNIT    | REAR UNIT     |
|-----------|---------------|---------------|
| BASEMENT  | 441 SQ. FT.   | 421 SQ. FT.   |
| 1ST FLOOR | 636 SQ. FT.   | 813 SQ. FT.   |
| 2ND FLOOR | 778 SQ. FT.   | 735 SQ. FT.   |
| 3RD FLOOR | 742 SQ. FT.   | 772 SQ. FT.   |
| ROOF DECK | 92 SQ. FT.    | 75 SQ. FT.    |
| TOTAL     | 2,689 SQ. FT. | 2,816 SQ. FT. |
| GARAGE    | 278 SQ. FT.   | 278 SQ. FT.   |



FIRST FLOOR PLAN  
9'0" CEILING HEIGHT



THE ARCHITECTURAL PLANS AND ELEVATIONS ARE ARCHITECTURAL CONCEPTS. DETAILS AND DIMENSIONS SHOWN MAY VARY FROM FINAL ARCHITECTS PLANS AND BUILDER FIELD CHANGES.

*HyView Terrace*

